

COMPASS



Northridge  
**9453 Shoshone Avenue**



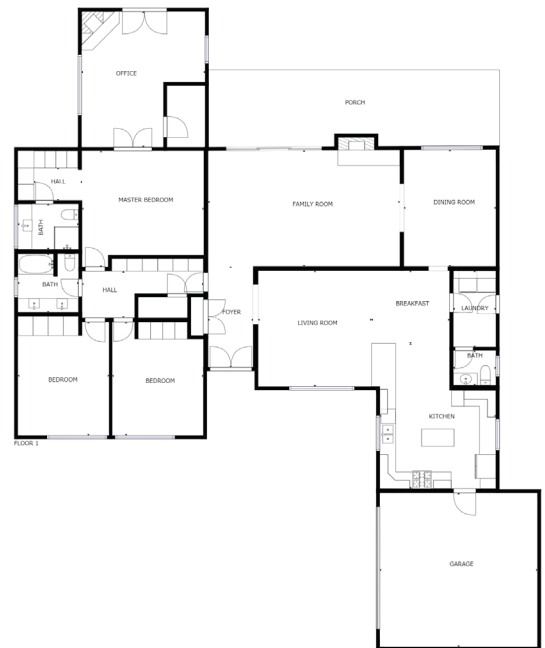
Northridge

## 9453 Shoshone Avenue

4 BD 3 BH 2,626 SF \$840,000

You'll pass a picturesque swing hanging from a vine-covered tree as you approach this well-maintained four bedroom home on a quiet cul-de-sac. The airy kitchen features stainless steel appliances and an island, along with an abundance of storage and counter space. Alongside the kitchen is a breakfast nook and the formal dining room. The master contains an en-suite bathroom and a unique extra bedroom that can be used as an office, lounge space, library, or home gym. Other special details have been added to this home, including copper plumbing, double-paned windows, two gas fireplaces, an ADT security system, and a covered patio off the family room. Pomegranate, orange, and apple trees adorn the large backyard. Adjacent to the highly sought-after community of Sherwood Forest, and in close proximity to dining, shopping, and freeways.





**Mary Arias**

REALTOR®  
 424.307.4248  
 DRE: 02049043  
 mary@piertopiergroup.com



COMPASS

**Want to learn more about the Los Angeles real estate market?**

Visit [piertopiergroup.com](http://piertopiergroup.com) for informational videos, weekly podcasts and updates on our favorite homes on the market.